



MARSH
LANDING
PLACE

THE MARTIN



HOUSE DESCRIPTION

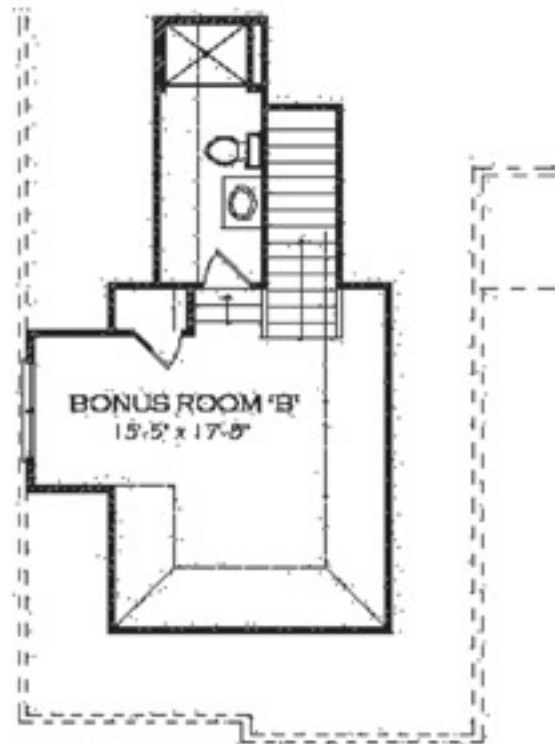
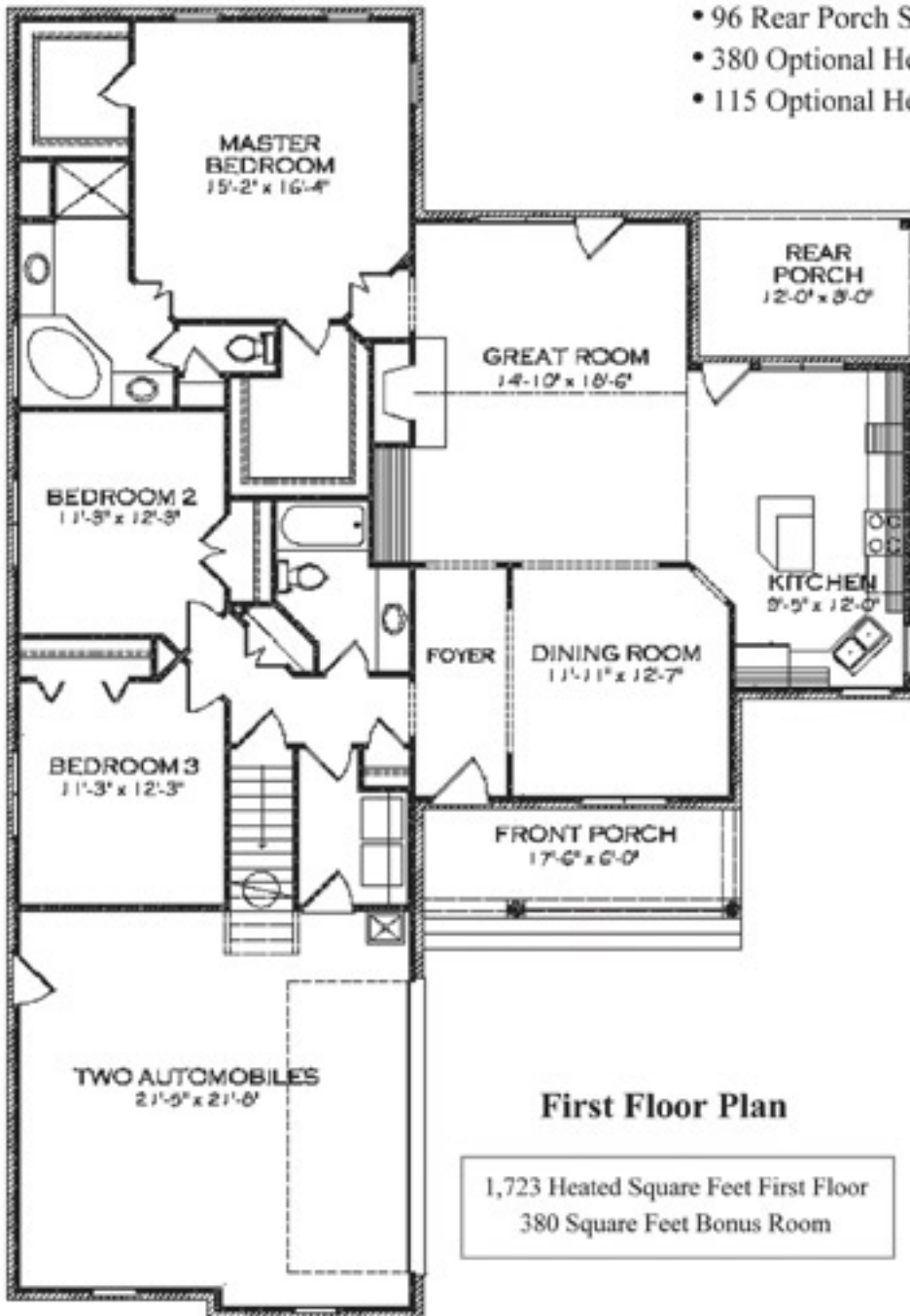
3 Bedrooms • 2 Baths • 2 Car Garage • 1,723 Heated Sq. Ft. • Optional Bonus Room

The Martin's great design and courtyard entry allows it to fit perfectly on any home site. With its distinctive floor plan with all bedrooms on one side of the house, the Martin is perfect for the family with small children who need to stay close by for convenience. It also lends well to the empty-nesters. Aside from the bedroom configuration, this open floor plan allows for a generous gathering of friends with the open and flowing current from kitchen to great room to dining room. You will also see the ease of morning from breakfast room to screen porch or optional sunroom when the weather is nice. And don't forget, the optional bonus room, or fourth bedroom, offers additional privacy and space.

www.MarshLandingPlace.com

MARTIN FLOOR PLAN

- 1,723 Heated First Floor Sq. Ft.
- 484 Garage Sq. Ft.
- 105 Front Porch Sq. Ft.
- 96 Rear Porch Sq. Ft.
- 380 Optional Heated Bonus Room Sq. Ft.
- 115 Optional Heated Sunroom Sq. Ft.



Sales Center Hours
Mon. - Sat. 9am-5pm & Sunday 10am-4pm

phone: 910.686.8191
fax: 910.686.8192

www.MarshLandingPlace.com

