

# THE MONTROSSE



## HOUSE DESCRIPTION

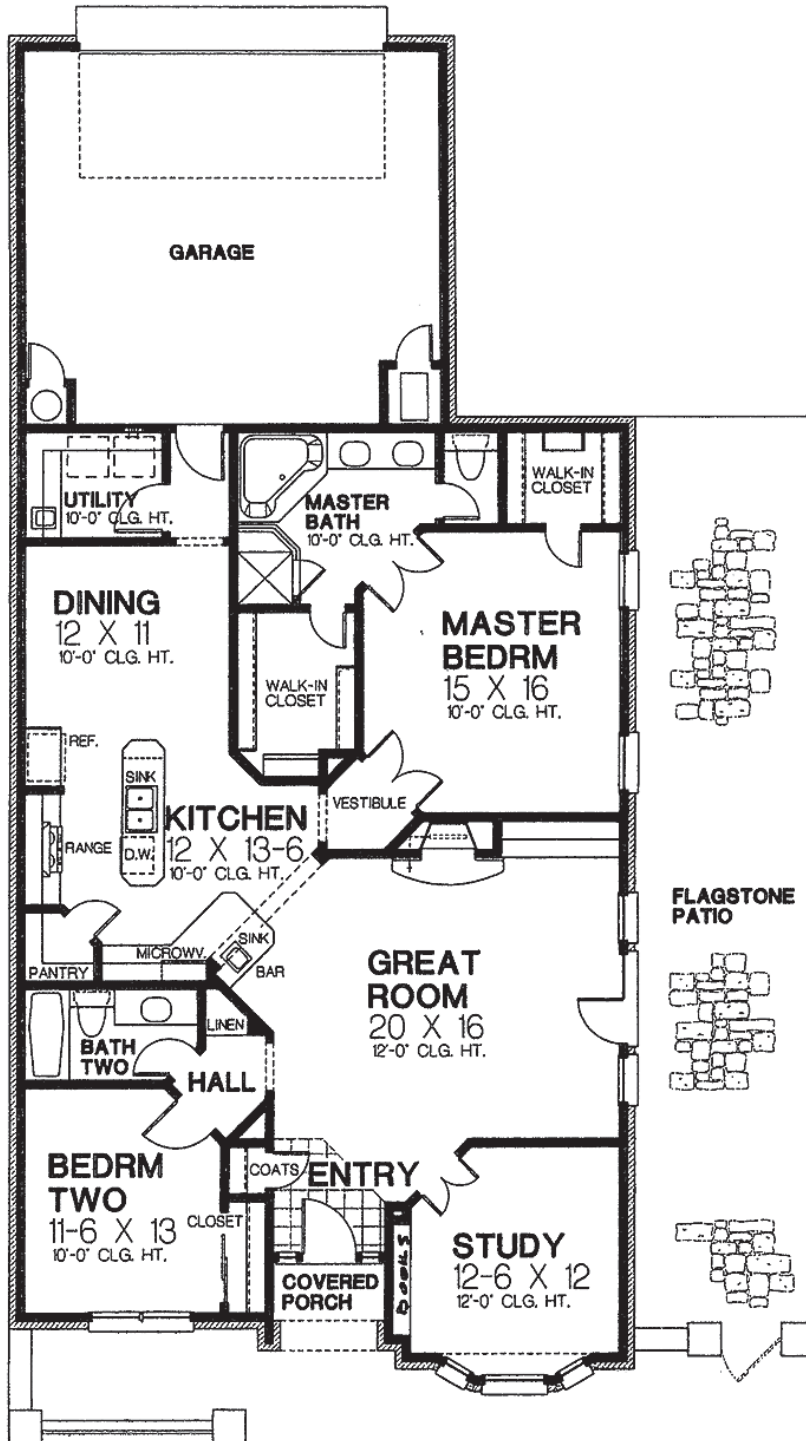
3 BEDROOMS › 2 BATHS › 2 CAR GARAGE  
1821 HEATED SQ. FT. ›

Spacious and stunning 3 bedroom, 2 bathroom English Tudor style brick home in the desirable community of Marsh Landing Place. Kitchen boasts Granite countertops, large center island, stainless steel appliances, built-in microwave, fridge, & a self cleaning oven. Hardwood & Ceramic tile flooring throughout. Master suite has dual walk-in closets & its own bathroom featuring a tile shower & garden tub. Additional unique features include a convenient wet bar, wainscoting, crown molding, 9 ft ceilings, built-in shelving, and stone accents inside & out. Elegant French doors in the dining area lead to a back deck overlooking the serene settings of Marsh Landing Place.



[WWW.MARSHLANDINGPLACE.COM](http://WWW.MARSHLANDINGPLACE.COM)

# FLOOR PLAN



**MARSH  
LANDING  
PLACE**

**SALES CENTER HOURS**  
MON. - SAT. 9AM-5PM & SUNDAY 10AM-4PM  
MARCH LANDING PLACE, LLC COMMUNITY

**PHONE: 910.523.0056**  
**FAX: 910.395.1001**  
**WWW.MARSHLANDINGPLACE.COM**

