



MARSH  
LANDING  
PLACE

# THE TAYLOR



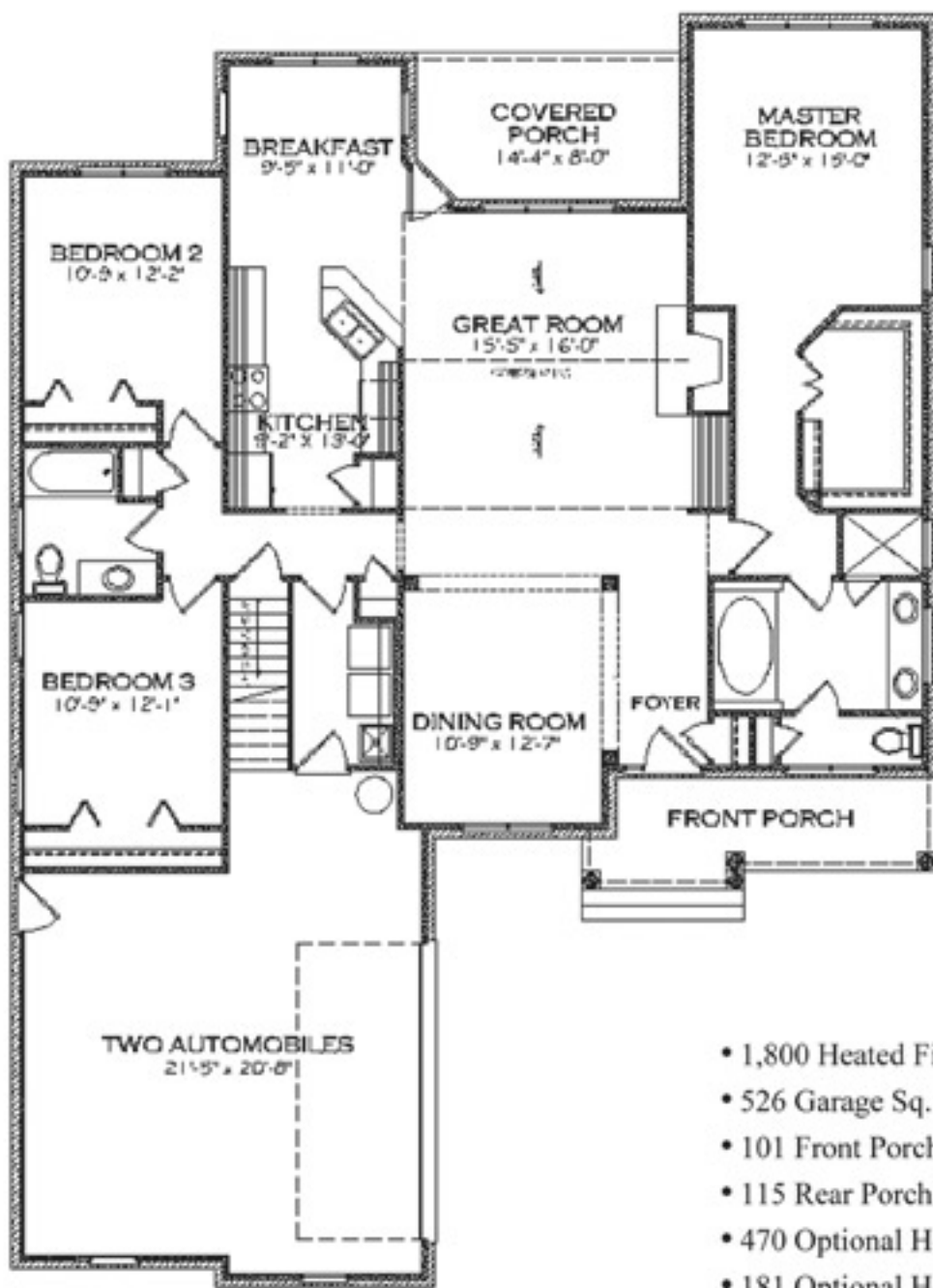
## HOUSE DESCRIPTION

3 Bedrooms • 2 Baths • 2 Car Garage • 1,800 Heated Sq. Ft. • Optional Bonus Room

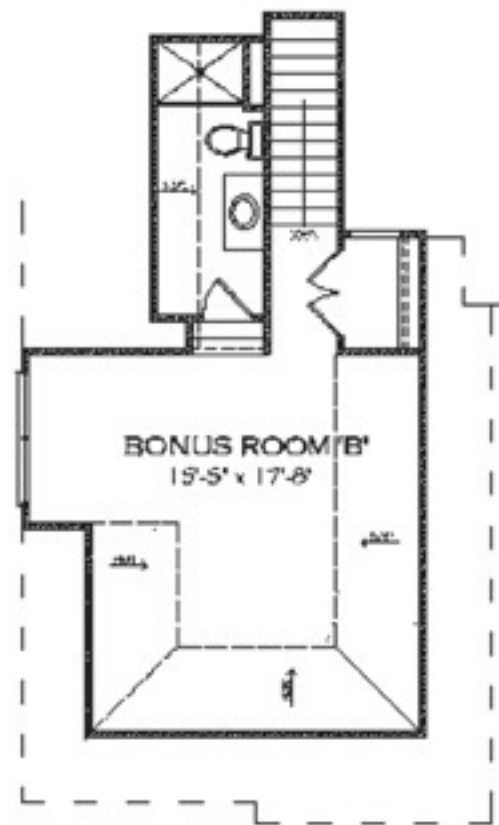
Fitting quite perfectly on any homesite, the Taylor is a masterpiece of floor design with the active and mature family in mind. With its master suite with tray ceilings on one side of the house and the other three bedrooms on the opposite, parents and children will have ample space and privacy. Kitchen and breakfast nook and patio/sunroom seem to flow like the tides of the Atlantic just a few miles east of the community. The nice, open great room and dining room are perfect for entertaining or just spending an evening with family.

[www.MarshLandingPlace.com](http://www.MarshLandingPlace.com)

# TAYLOR FLOOR PLAN



**First Floor Plan**



**Bonus Room 'B' Plan**

- 1,800 Heated First Floor Sq. Ft.
- 526 Garage Sq. Ft.
- 101 Front Porch Sq. Ft.
- 115 Rear Porch Sq. Ft.
- 470 Optional Heated Bonus Room Sq. Ft.
- 181 Optional Heated Sunroom Sq. Ft.

1,800 Heated Square Feet First Floor  
 469 Square Feet Bonus Room 'A'  
 181 Square Feet Bonus Room 'B'

Sales Center Hours  
 Mon. - Sat. 9am-5pm & Sunday 10am-4pm

phone: 910.686.8191  
 fax: 910.686.8192

[www.MarshLandingPlace.com](http://www.MarshLandingPlace.com)

