



MARSH
LANDING
PLACE

THE THOMAS



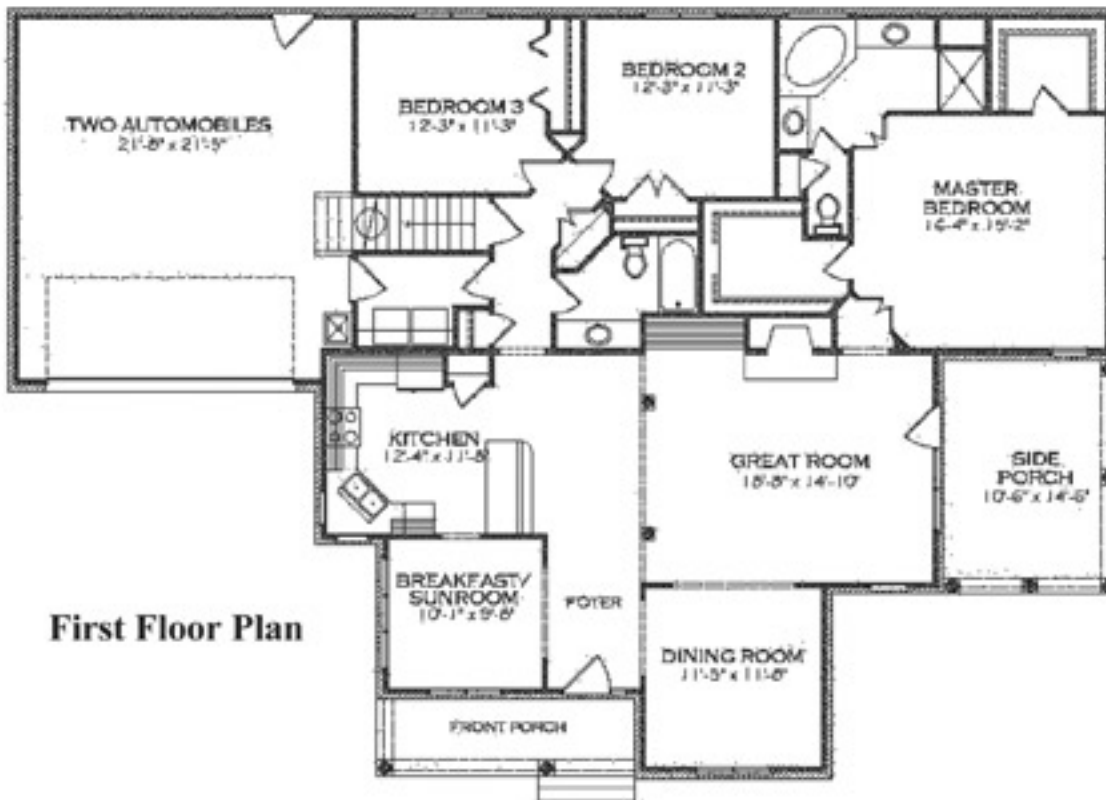
HOUSE DESCRIPTION

3 Bedrooms • 2 Baths • 2 Car Garage • 1,904 Heated Sq. Ft. • Optional Bonus Room

With its long front and shallow footprint, the Thomas was designed to fit on lots with more width than depth. Its open and flowing floorplan is sure to be a crowd pleaser. The biggest of our plans, the Thomas is designed for the family who longs for a bit more room but without sacrificing a lot more money. We also designed this house with a front entry garage so if courtyard entry is not your choice, this may just be the home for you. Also notice the side porch off the great room - another plus if your lot has premium side views.

www.MarshLandingPlace.com

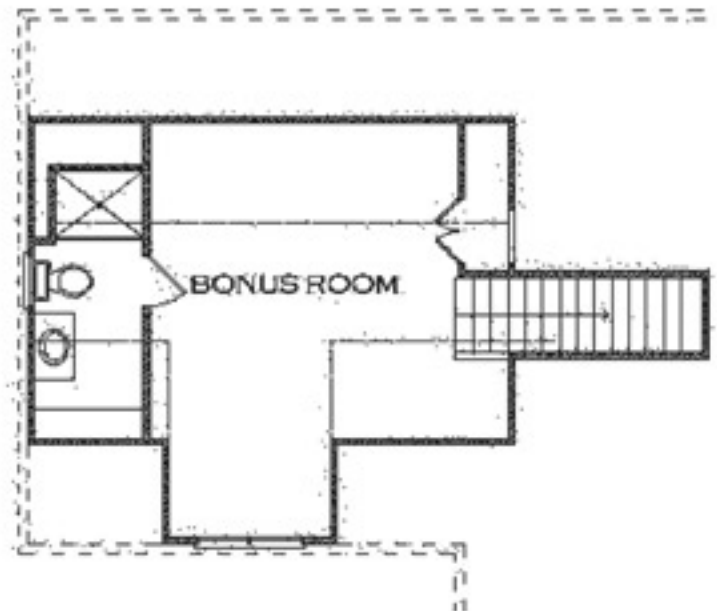
THOMAS FLOOR PLAN



First Floor Plan

Second Floor Plan

- 1,904 Heated First Floor Sq. Ft.
- 523 Garage Sq. Ft.
- 84 Front Porch Sq. Ft.
- 394 Optional Heated Bonus Room Sq. Ft.
- 169 Optional Heated Sunroom Sq. Ft.



Sales Center Hours
 Mon. - Sat. 9am-5pm & Sunday 10am-4pm
 phone: 910.686.8191
 fax: 910.686.8192
www.MarshLandingPlace.com

